



At Evesham Nursery School the use of 'visual supports' are integral to developing our daily routines and expectations. The staff wear a lanyard with visual supports to use in a classroom, in addition, the images will be seen around the learning environment.

There are many reasons why we find the use of 'visuals' helpful e.g.:

- To establish routines.

Having a room's 'visual time line' in a picture format helps children to navigate their day. Children can begin to anticipate the next part of the day. Once they learn the routine, many children will want to help in sequencing through the pictures as the day progresses.

- To set clear expectations.

Children can understand what is expected of them if they have a visual reference of the classroom expectations.

- To support smooth activity transitions

Transitions can be difficult for young children e.g. if a child is having difficulty with a certain transition a picture cue can be a big help.

- To reinforce desired behaviour

The children quickly learn to recognise the pictures that encourage them to e.g. "show good sitting" etc.

To support your child during the transition from home to Nursery school it would be wonderful if you could show these images to your child, talk to them about what they show and explain that when they are at Nursery they will see the same images.



good thinking



wash hands



stop



tidy up time



inside



lunch



walk



coat



happy



sad



drink



snack



toilet



outside



shoes



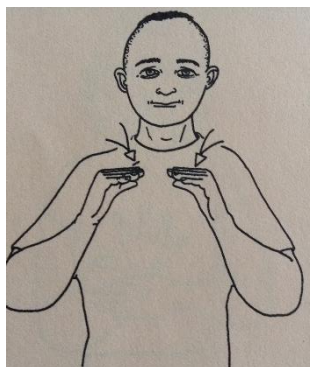
boots



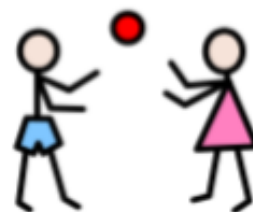
home



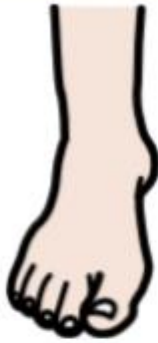
bag



finished



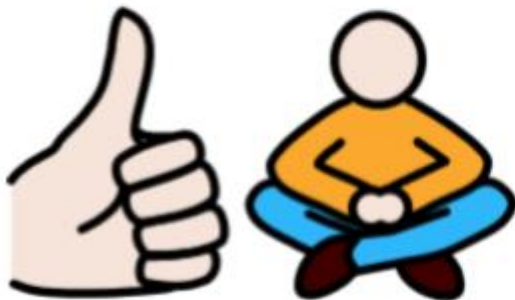
playing
outside



kind feet



good listening



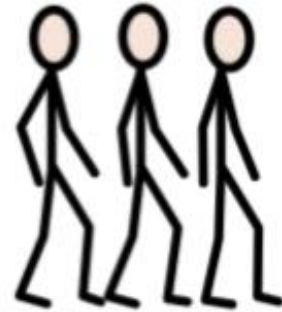
good sitting



good looking



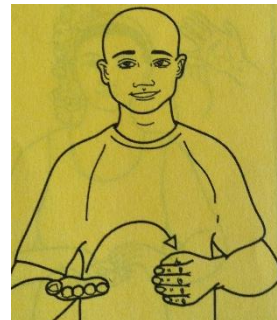
share



line up



ill



more